

**Web-Based Land and Building Tax Records Information System  
(Study In One of The Regions in Bandung)**

**Yuniarti<sup>1</sup>, Alia Tri Utami<sup>2</sup>, Ganjar Nurul F<sup>3</sup>, Adi Suwarno<sup>4</sup>**

<sup>1,2,3,4</sup> STMIK Mardira Indonesia, Bandung

Email: Yuniarti140601@gmail.com<sup>1</sup>, alia@stmik-mi.ac.id<sup>2</sup>, ganjar@stmik-mi.ac.id<sup>3</sup>,  
adi.suwarno@stmik-mi.ac.id<sup>4</sup>

---

**Abstract**

*The property tax registration process in One of The Regions in Bandung is carried out manually, resulting in the reliance on books and archiving in cabinets for information registration. The PBB registration process also includes inputting and reporting information through personal calls made via social media chat. This process especially demands citizens to physically visit the village without possessing an official letter when they receive a call. The absence of written proof when contacting the inhabitants causes them to feel anxious and uncertain, resulting in physical fatigue for the village staff. The Property Tax registration information system can oversee the data recording process for all system users (administrators, operators, visitors), including data recording, biodata recording, village services, and calling operations. Furthermore, residents can access and examine this information system via the Internet, enabling efficient monitoring and viewing of relevant data.*

**Keywords:** *Information System, Building Tax, Web*

---

## **Introduction**

Data has become an essential component of progress and development in all areas of human existence, thanks to the advancements in science and technology. The use of advancing PC-based technologies allows for efficient, rapid, and precise completion of activities, hence facilitating the supervision and retrieval of data. The incorporation of computer-based technologies as tools for information technology in workplaces and organizations boosts the efficiency of data processing and aids in the execution of daily operations.

The Property Tax Management Information System is a framework employed for operational implementation in the Regional Revenue Management Agency of Bandung District, which continues to utilize Visual Basic.

## **System and Information**

Meilinda & Jayanti, (2022) defines a system as a network of interconnected procedures organized to carry out activities or accomplish specified objectives.

Information refers to data that has undergone processing to become more valuable and meaningful to the intended recipient. Data is the primary source of information, consisting of factual details about events and tangible entities. Events are incidents that take place at a particular moment. (Kristina Natonis et al., 2022)

## **Website**

Latowa et al., (2020) perspective, a website is an online platform that links together documents inside a specific geographic area or from a distant location. The website contains web pages, which are documents. Links on the website enable visitors to navigate between pages, both inside the same server and across servers globally.

## **The software in question is Sublime Text.**

R et al., (2023) define Sublime Text as software designed to create and modify applications.

## **XAMPP**

Purbadian (2016);Badriyah et al., (2018) defines XAMPP as open-source software that extends LAMP (Linux et al.).

## **MySQL**

Fatturohman & Ilyasa, (2020) defines MySQL as a robust relational database management system (RDBMS) that excels in efficient database management, scalability for handling significant data volumes, and multi-user accessibility.

## **CodeIgniter**

Agus Tiyo & Latifah, (2022); Gouda Mohamed et al., (2020) defines CodeIgniter as a PHP web framework that serves as a toolkit for anyone interested in constructing online applications using the PHP programming language.

The Property Tax Management Information System is utilized to manage data about property and taxpayer entities. (Dwi Oktavianto et al., 2022; Omidipoor et al., 2019) This includes data collection (registration, data collection, and assessment), identification, and generating output results in the form of the Tax Due Notification and the issuance of the Proof of Payment Receipt (STTS).

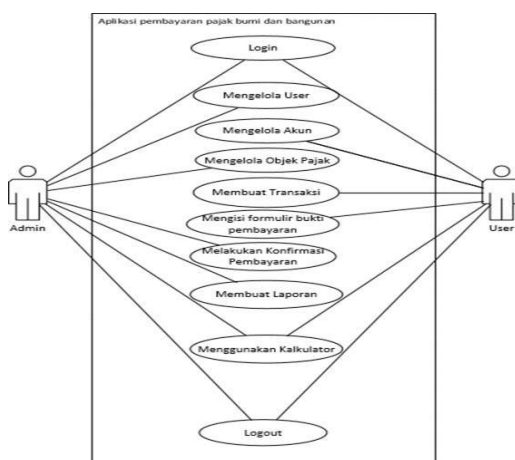
The Bandung District's revenue is primarily generated by issuing Tax Due Notifications for settling Rural and Urban Land and Building Taxes. As a result, the district will ultimately issue Proof of Payment Receipts to serve as evidence of payment completion.

Given this, attention can be directed towards the Property Tax Information System P2 to streamline the distribution process of the Land and Building Tax Payment Letter (SPPT) to settle the Land and Building Tax P2. BAPPENDA has created a web-based system to optimize the management of Land and Building Tax P2 in Bandung District. Manual management entails various disadvantages, including the protracted search procedure for taxpayer object data in cases where taxpayers need to make payments, the risk of losing taxpayer object data, the heightened workload for village treasurers who have to manually transcribe all reports produced by village officials into a digital file format and the potential loss

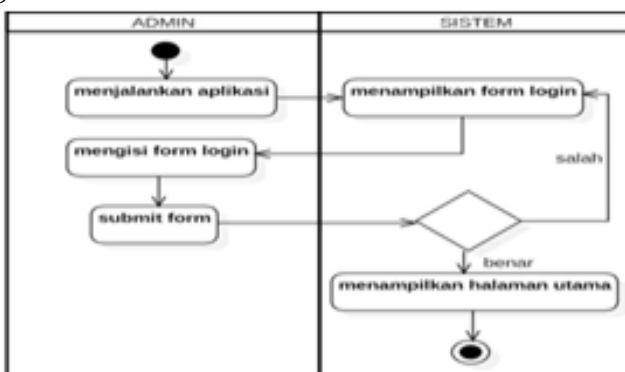
of payment reporting data for both the present and past years. Considering the issues above, The author focuses on developing a web-based Property Tax Information System that can efficiently input and store data in a database. Therefore, the author has selected "WEB-BASED LAND AND BUILDING TAX RECORDS INFORMATION SYSTEM (STUDY IN ONE OF THE REGIONS IN BANDUNG)"

### Research Method

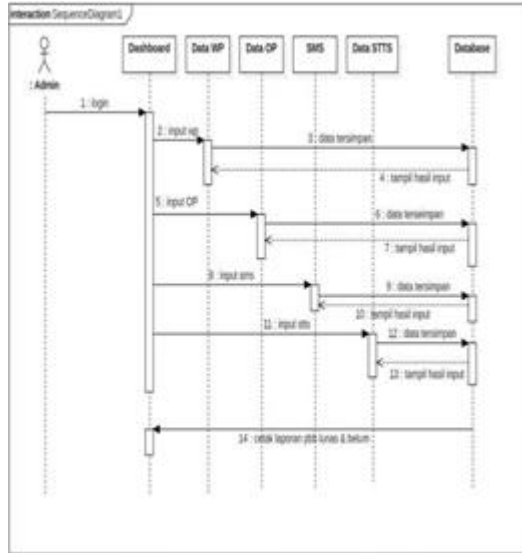
Use case diagrams



Activity diagrams



### System planning



### Database Design

| Field               | Type    | Size | Primary |
|---------------------|---------|------|---------|
| <u>id_user</u>      | Integer | 11   | Key     |
| Username            | Varchar | 20   |         |
| Password            | Text    |      |         |
| <u>id_hak akses</u> | Integer | 1    |         |
| Status              | Integer | 1    |         |

### Interface Design

#### Login

Username

Password

## Result and Discussion

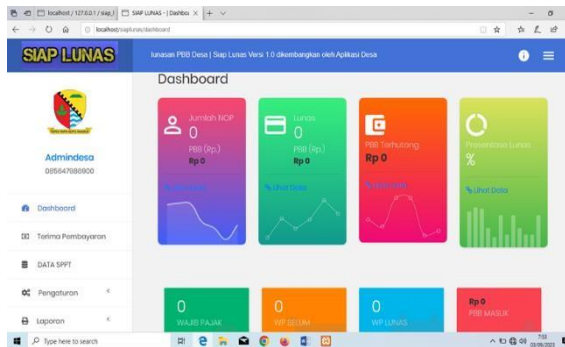
### System Implementation

The system implementation step involves describing and preparing an application system for operational readiness.

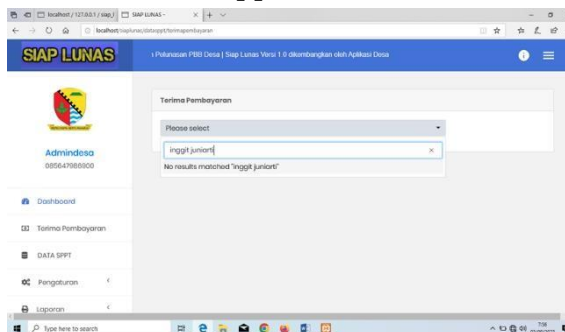
#### Login Page Display



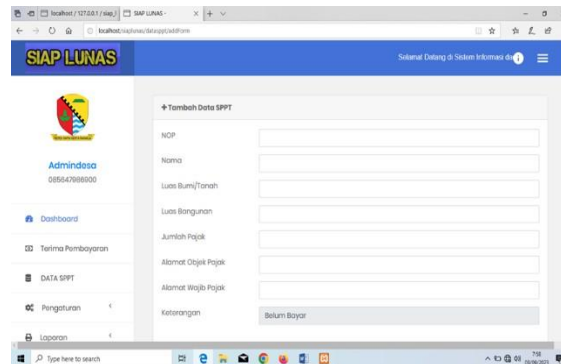
#### Home Page/Dashboard Display



#### Appearance



#### Tax return data display



## **Conclusion**

The research findings can be summarized as follows: The Property Tax Information System is implemented to automate bookkeeping processes, removing the need for human data entry in physical books. This has led to improved time management. The property tax website incorporates an official letter function, obviating the town's need to communicate through chat calls. The Information System streamlines demographic data collecting and overcomes the obstacles encountered by the non-computerized system.

Future scholars should explore several suggestions: The author desires the efficient and suitable utilization of the information system within its intended context. It is recommended that villages adopt and implement this information system to administer information effectively. Users participating in this information system must comprehensively understand the system. If required, training should be offered for system maintenance. Despite the use of a computerized system, it is prudent for the village to retain a backup file to mitigate any unforeseen complications with the system. It would be wise to retain physical copies of counseling-related data produced by this system as an example.

## References

- Agus Tiyo, M. S., & Latifah, N. (2022). Sistem Informasi E-SPPT SPOP Pajak Bumi Berbasis Web Di Badan Pengelolaan Pendapatan, Keuangan Dan Aset Daerah (BPPKAD) Kabupaten Kudus. *Jurnal SITECH: Sistem Informasi Dan Teknologi*, 4(2), 185–196. <https://doi.org/10.24176/sitech.v4i2.7162>
- Badriyah, T., Azvy, S., Yuwono, W., & Syarif, I. (2018). Recommendation system for property search using content based filtering method. *2018 International Conference on Information and Communications Technology (ICOIACT)*, 25–29. <https://doi.org/10.1109/ICOIACT.2018.8350801>
- Dwi Oktavianto, A., Pandu Kusuma, A., & Chulkamdi, M. T. (2022). PERANCANGAN SISTEM INFORMASI GEOGRAFIS RUMAH WAJIB PAJAK BUMI DAN BANGUNAN MENGGUNAKAN METODE EUCLIDEAN DISTANCE. *JATI (Jurnal Mahasiswa Teknik Informatika)*, 6(2), 589–600. <https://doi.org/10.36040/jati.v6i2.5338>
- Fatturohman, R. R., & Ilyasa, R. (2020). SISTEM INFORMASI PENDATAAN PAJAK DAERAH PADA BADAN KEUANGAN DAERAH KOTA CIREBON BERBASIS WEB MENGGUNAKAN METODE SELF ASSESSMENT SYSTEM. *Jurnal Digit*, 10(2), 161. <https://doi.org/10.51920/jd.v10i2.167>
- Gouda Mohamed, A., Abdallah, M. R., & Marzouk, M. (2020). BIM and semantic web-based maintenance information for existing buildings. *Automation in Construction*, 116, 103209. <https://doi.org/10.1016/j.autcon.2020.103209>
- Kristina Natonis, Maria Adelvin Londa, & Melky Radja. (2022). Sistem Informasi Pajak Bumi dan Bangunan Berbasis Stand Alone. *SATESI: Jurnal Sains Teknologi Dan Sistem Informasi*, 2(2), 154–169. <https://doi.org/10.54259/satesi.v2i2.1162>
- Latowa, F. S. M., Kaluku, M. R. A., & Lahinta, A. (2020). Sistem Informasi Monitoring Wajib Pajak Bumi Dan Bangunan Berbasis Web. *Jambura Journal of Informatics*, 2(2), 108–118. <https://doi.org/10.37905/jji.v2i2.7150>
- Meilinda, E., & Jayanti, W. E. (2022). PERAN WATERFALL SEBAGAI METODE PENGEMBANGAN PERANGKAT LUNAK PADA SISTEM INFORMASI PENDATAAN PAJAK BUMI DAN BANGUNAN. *Jurnal Teknologi Informasi Mura*, 14(2), 144–155. <https://doi.org/10.32767/jti.v14i2.1853>
- Omidipoor, M., Jelokhani-Niaraki, M., & Samany, N. N. (2019). A Web-based geo-marketing decision support system for land selection: a case



- study of Tehran, Iran. *Annals of GIS*, 25(2), 179–193.  
<https://doi.org/10.1080/19475683.2019.1575905>
- R, M. A., Nilma, N., & Hikmah, R. (2023). APLIKASI PEMBAYARAN PAJAK BUMI DAN BANGUNAN (PBB) PADA KELURAHANTRIDAYASAKTI BERBASIS DESKTOP. *Semnas Ristek (Seminar Nasional Riset Dan Inovasi Teknologi)*, 7(1).  
<https://doi.org/10.30998/semnasristek.v7i1.6243>